


# Colors options

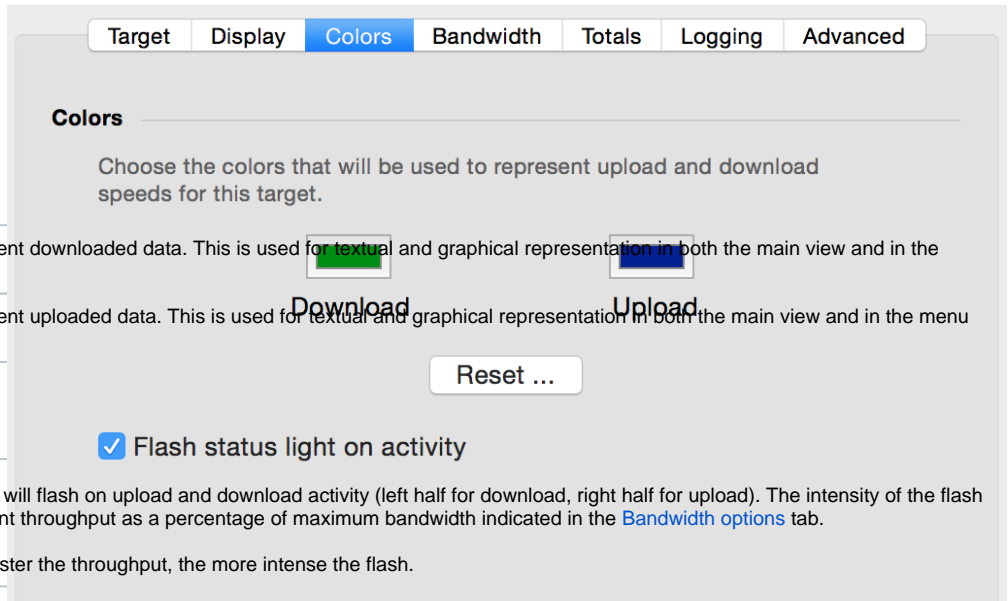
This tab lets you customise the colors that represent uploaded and downloaded data for this target.

## Colors

<b>Download</b>	The color used to represent downloaded data. This is used for textual and graphical representation in both the main view and in the menu bar.
<b>Upload</b>	The color used to represent uploaded data. This is used for textual and graphical representation in both the main view and in the menu bar.

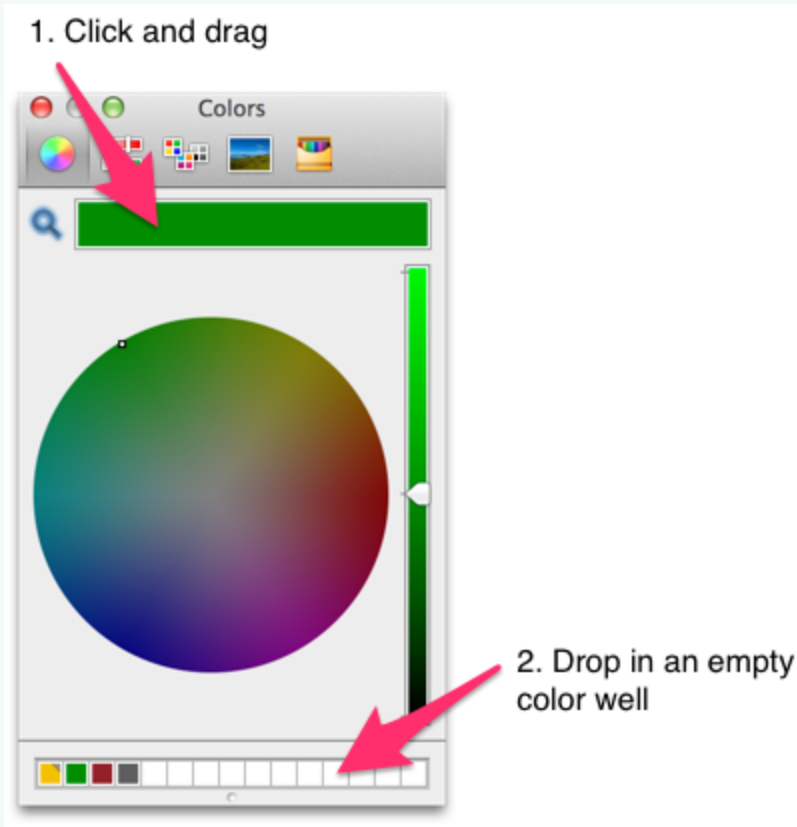
## Options

<b>Flash status light on activity</b>	 The status light will flash on upload and download activity (left half for download, right half for upload). The intensity of the flash is based on the current throughput as a percentage of maximum bandwidth indicated in the <a href="#">Bandwidth options</a> tab.  In other words, the faster the throughput, the more intense the flash.
---------------------------------------	--



The screenshot shows the 'Colors' tab selected in a menu bar with other tabs: Target, Display, Colors, Bandwidth, Totals, Logging, and Advanced. Below the menu bar, the 'Colors' section has a heading and a description: 'Choose the colors that will be used to represent upload and download speeds for this target.' There are two color pickers: one for 'Download' (green) and one for 'Upload' (blue). A 'Reset ...' button is located below the pickers. A checkbox labeled 'Flash status light on activity' is checked.

- ✓ If you'd like to copy the color(s) used from one target to another, you can drag and drop colors into the color well at the bottom of the color chooser window. For example:



You can then reverse the process to copy that color to other targets.