

I'd like to monitor my Mac/PC/Linux devices. How can I enable them?

PeakHour can monitor the bandwidth usage of any device that supports SNMP. Enabling SNMP will enable PeakHour to monitor the specific bandwidth usage of your computers, providing a more granular breakdown of their usage.

This article explains how to enable SNMP on the three most popular desktop operating systems: Mac OS X, Windows and Linux.

- [Mac OS X](#)
- [Microsoft Windows](#)
- [Linux](#)

Mac OS X

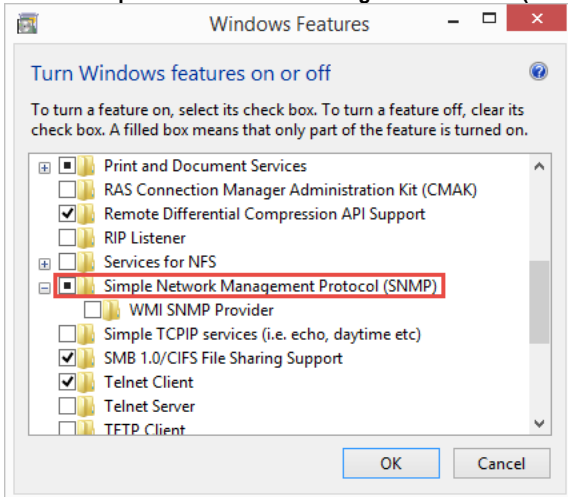
Check out [PeakHour Enabler](#), our free tool that gets your Mac ready for PeakHour.

Microsoft Windows

On most Windows systems, the SNMP service is not installed by default. Follow these steps to install it:

Installing the SNMP service

1. Click **Start > Control Panel > Programs > Programs and Features**
2. On the left-hand side, click Turn **Windows features on or off**
3. Scroll to **Simple Network Device Management Protocol (SNMP)** and click the checkbox to select it.



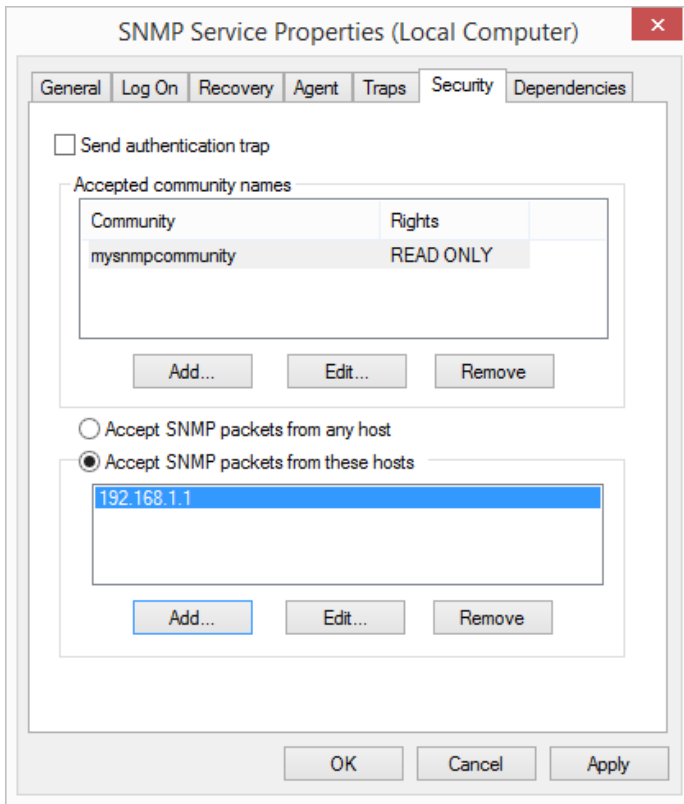
4. Click OK

The SNMP service will install.

Configuring the SNMP service

1. Click **Start > Settings > Control Panel > Administrative Tools** and then open **Computer Management**.
2. In the tree view, expand **Services and Applications** and then click **Services**.
3. In the list of services, scroll down and locate **SNMP Service**.
4. Under the **Action** menu, click **Properties**.
5. Click the **Security** tab.
6. Under **Accepted community names**, click **Add**.
7. Under **Community Rights**, choose **READ ONLY**.
8. In **Community Name**, type a case-sensitive community name, and then click Add. More information: [SNMP Community](#).
9. Specify whether or not to accept SNMP packets from a specific host or all hosts:
 - To accept SNMP requests from any host on the network, click **Accept SNMP packets from any host**.
 - To limit SNMP requests to specific hosts, click **Accept SNMP packets from these hosts**, click **Add** and type the appropriate host name or IP address, and then click **Add** again.
10. Click **Apply** to apply the changes.

Example SNMP configuration



Linux

Installing net-snmpd on Linux varies widely from distribution to distribution. We recommend you consult the documentation / support forms / communities for the most up-to-date instructions for your distribution.